



## DAILY CURRENCY REPORT

25 June 2026

## Domestic Currencies

Currency	Expiry	Open	High	Low	Close	% Change
USDINR	25-Jun-26	94.9000	94.9500	94.4925	94.5450	-0.21
USDINR	29-Jul-26	95.1800	95.2600	94.8200	94.8875	-0.20
EURINR	25-Jun-26	108.1000	108.1300	107.4000	107.5325	-0.69
GBPINR	25-Jun-26	125.2500	125.3800	124.3000	124.3625	-0.82
JPYINR	25-Jun-26	59.2300	59.2300	58.7800	58.7800	-0.98

## Open Interest Snapshot

Currency	Expiry	% Change	% Oi Change	Oi Status
USDINR	25-Jun-26	-0.21	-5.73	Long Liquidation
USDINR	29-Jul-26	-0.20	119.24	Fresh Selling
EURINR	25-Jun-26	-0.69	-0.79	Long Liquidation
GBPINR	25-Jun-26	-0.82	-2.95	Long Liquidation
JPYINR	25-Jun-26	-0.98	-13.27	Long Liquidation

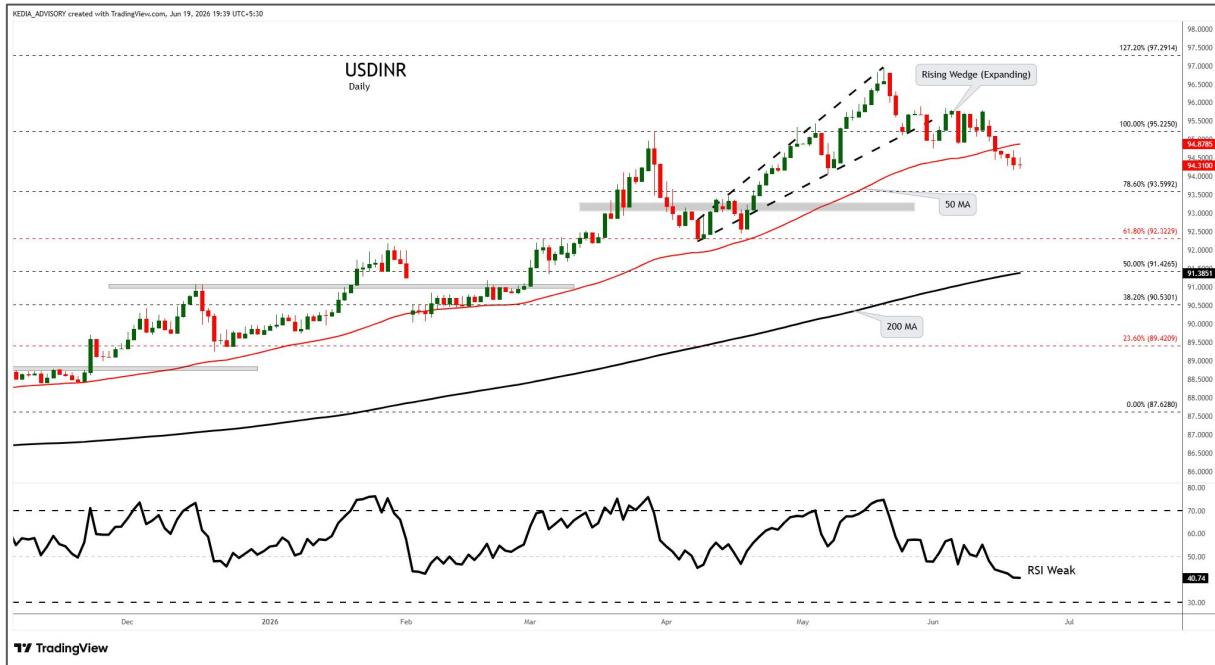
## Global Indices

Index	Last	%Chg
Nifty	24021.65	0.83
Dow Jones	51848.90	0.35
NASDAQ	25476.64	-0.43
CAC	8385.49	0.54
FTSE 100	10461.63	0.31
Nikkei	71794.53	3.79

## International Currencies

Currency	Last	% Change
EURUSD	1.1363	0.08
GBPUSD	1.3177	0.09
USDJPY	161.676	-0.06
USDCAD	1.4231	-0.04
USDAUD	1.4502	0.03
USDCHF	0.8112	-0.17

Technical Snapshot



**SELL USDINR JUN @ 94.8 SL 95 TGT 94.6-94.4.**

Trading Levels

Expiry	Close	R2	R1	PP	S1	S2
25-Jun-26	94.5450	95.12	94.83	94.66	94.37	94.20

Observations

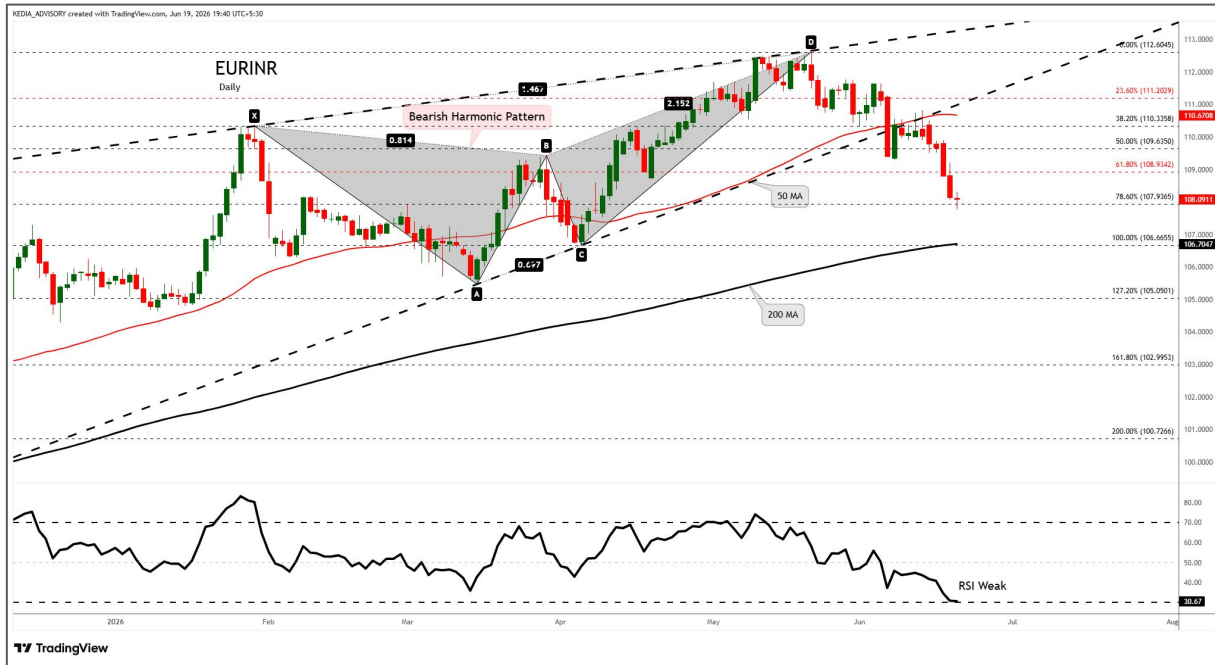
USDINR trading range for the day is 94.2-95.12.

Rupee cushioned by central bank hand even as dollar strength dents Asia currencies

RBI Chief Malhotra said that the central bank was watching for second-round effects of higher oil prices on inflation in the broader economy.

RBI Chief Malhotra reiterated that the RBI does not target any level for the rupee and instead intervenes only to curb disorderly moves in the FX market.

Technical Snapshot



**SELL EURINR JUN @ 107.5 SL 107.8 TGT 107.2-107.**

Trading Levels

Expiry	Close	R2	R1	PP	S1	S2
25-Jun-26	107.5325	108.42	107.98	107.69	107.25	106.96

Observations

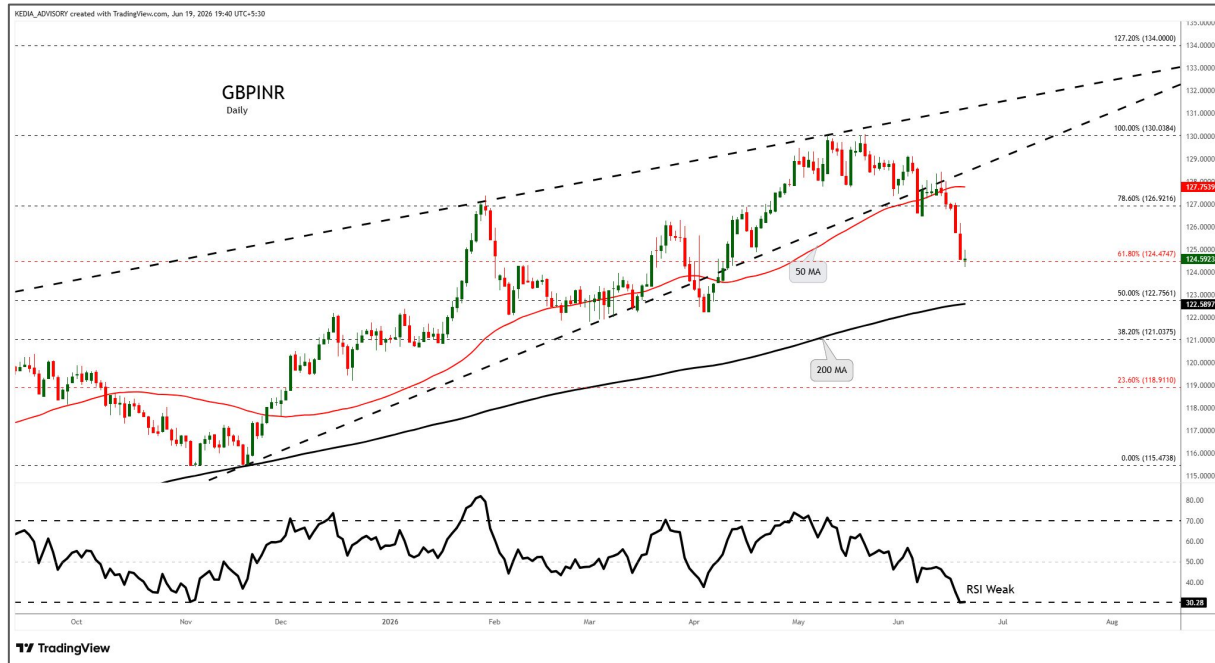
EURINR trading range for the day is 106.96-108.42.

Euro weakened on broad US dollar strength amid expectations that the Fed will raise interest rates later this year following hawkish comments.

Germany's Ifo Business Climate Index increased to 85.6 in June 2026, the highest in three months, compared to an upwardly revised 85 in May.

Private sector activity in Germany contracted at the fastest pace since 2024, while the Euro Area also remained in contraction territory.

Technical Snapshot



**SELL GBPINR JUN @ 124.5 SL 124.8 TGT 124.2-124.**

Trading Levels

Expiry	Close	R2	R1	PP	S1	S2
25-Jun-26	124.3625	125.76	125.06	124.68	123.98	123.60

Observations

GBPINR trading range for the day is 123.6-125.76.

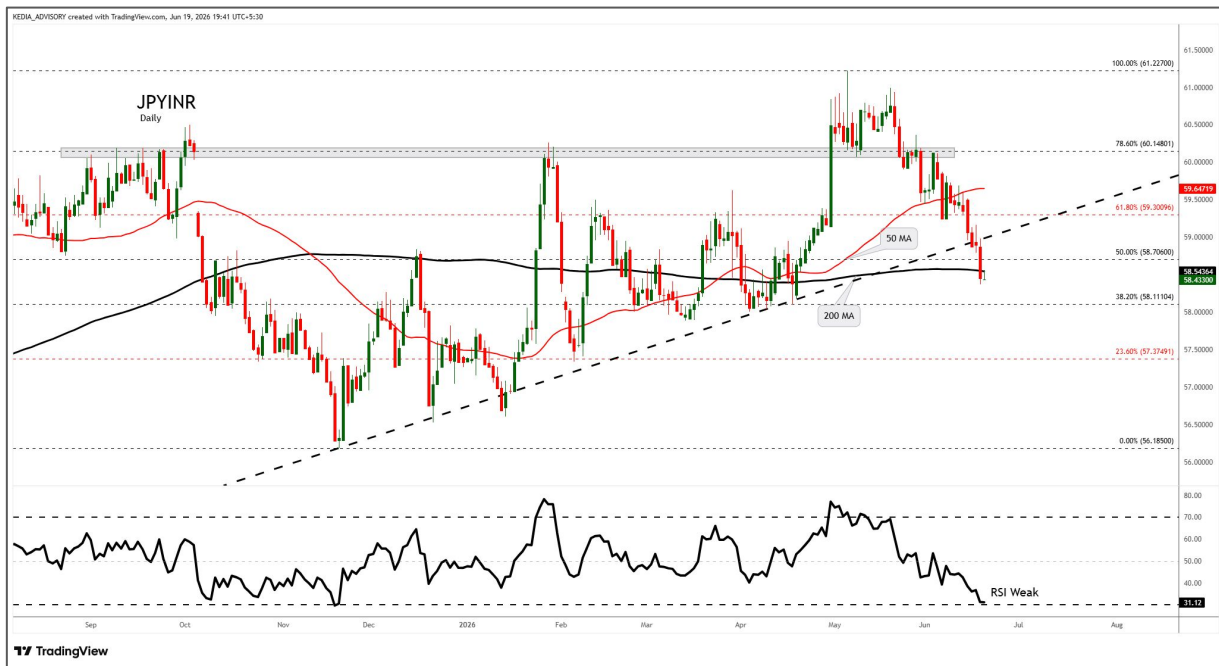
GBP weakened as investors balanced easing political uncertainty with weaker UK economic data.

Investors welcomed signs that a prolonged Labour leadership contest was becoming less likely after Keir Starmer announced his resignation.

June flash PMI data showed a weaker picture, with the composite index falling to a 14-month low of 49.4, below expectations.

25 June 2026

## Technical Snapshot



**SELL JPYINR JUN @ 58.8 SL 59 TGT 58.6-58.4.**

## Trading Levels

Expiry	Close	R2	R1	PP	S1	S2
25-Jun-26	58.7800	59.38	59.08	58.93	58.63	58.48

## Observations

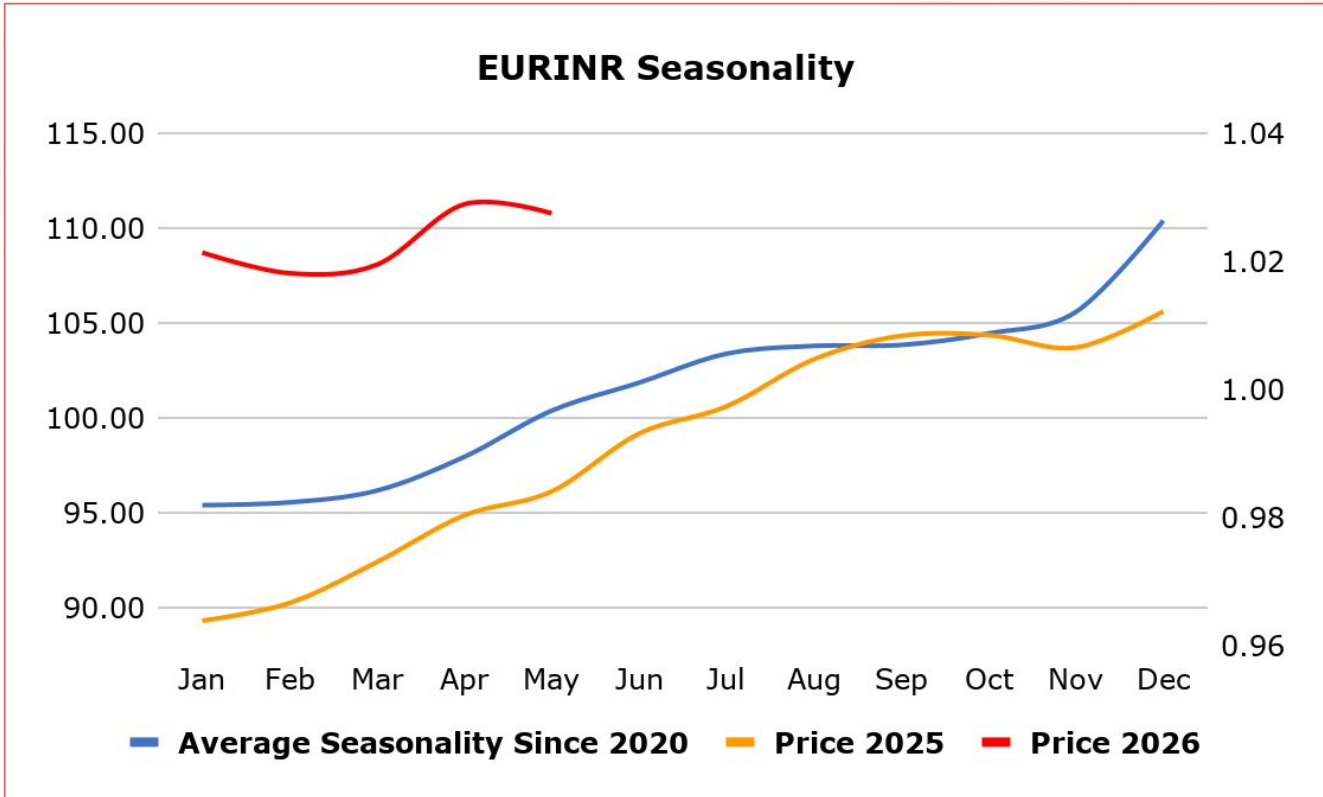
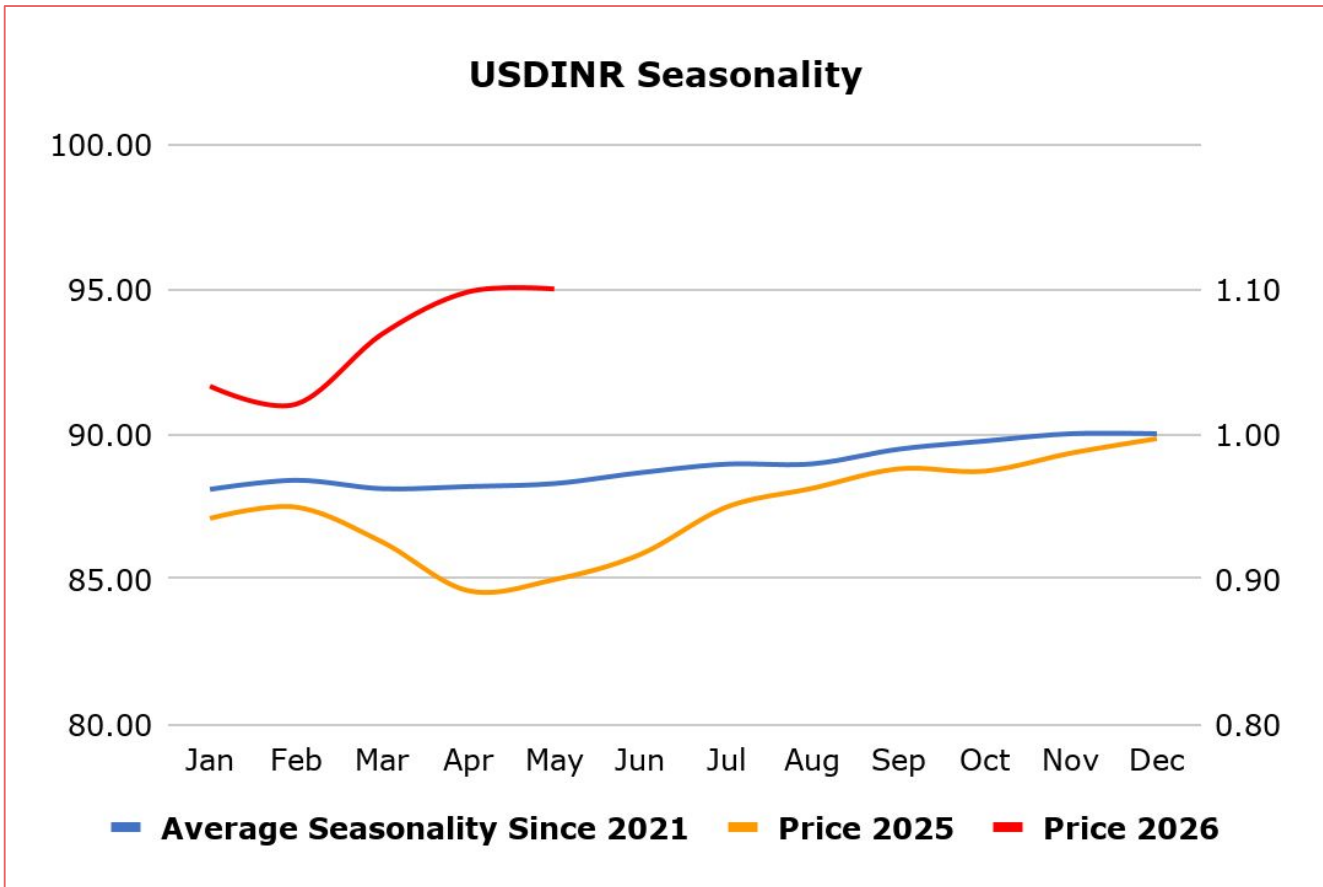
JPYINR trading range for the day is 58.48-59.38.

JPY dropped despite repeated verbal intervention from officials provided little support for the currency.

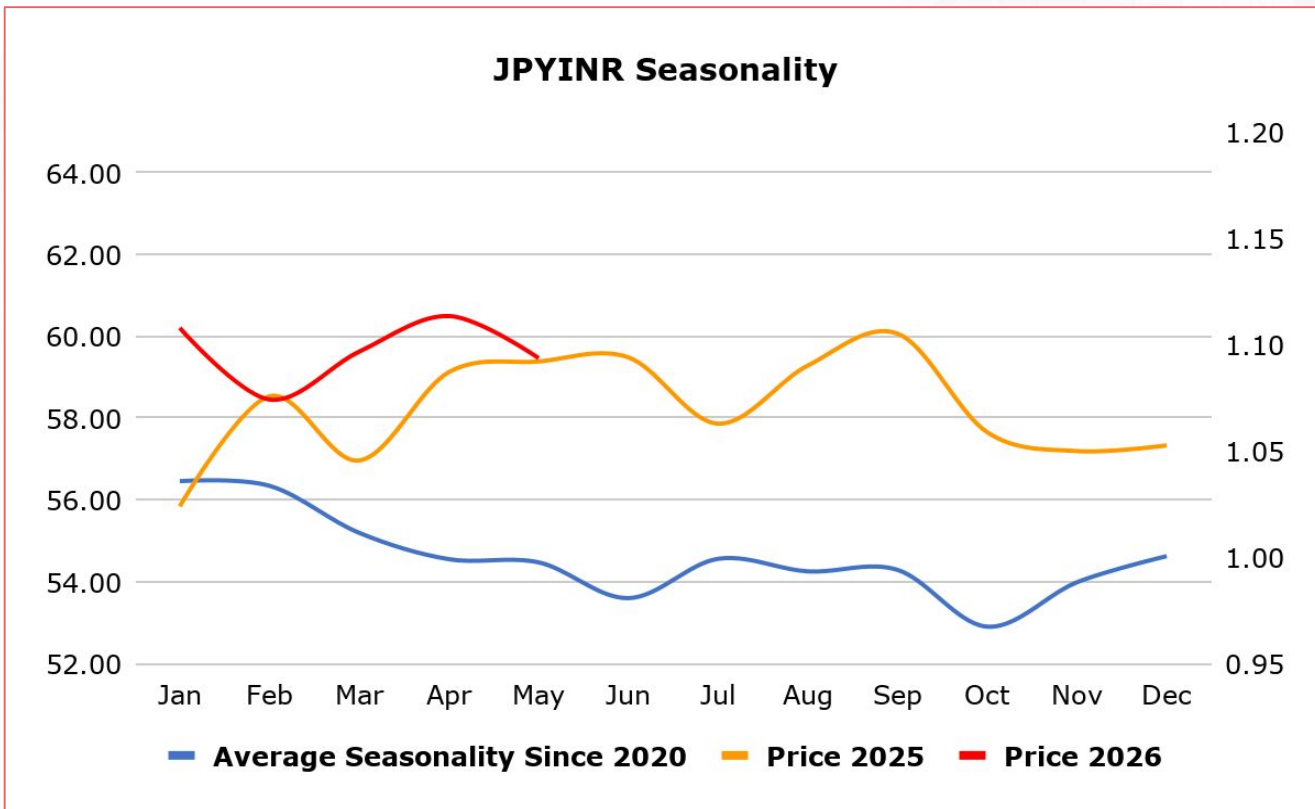
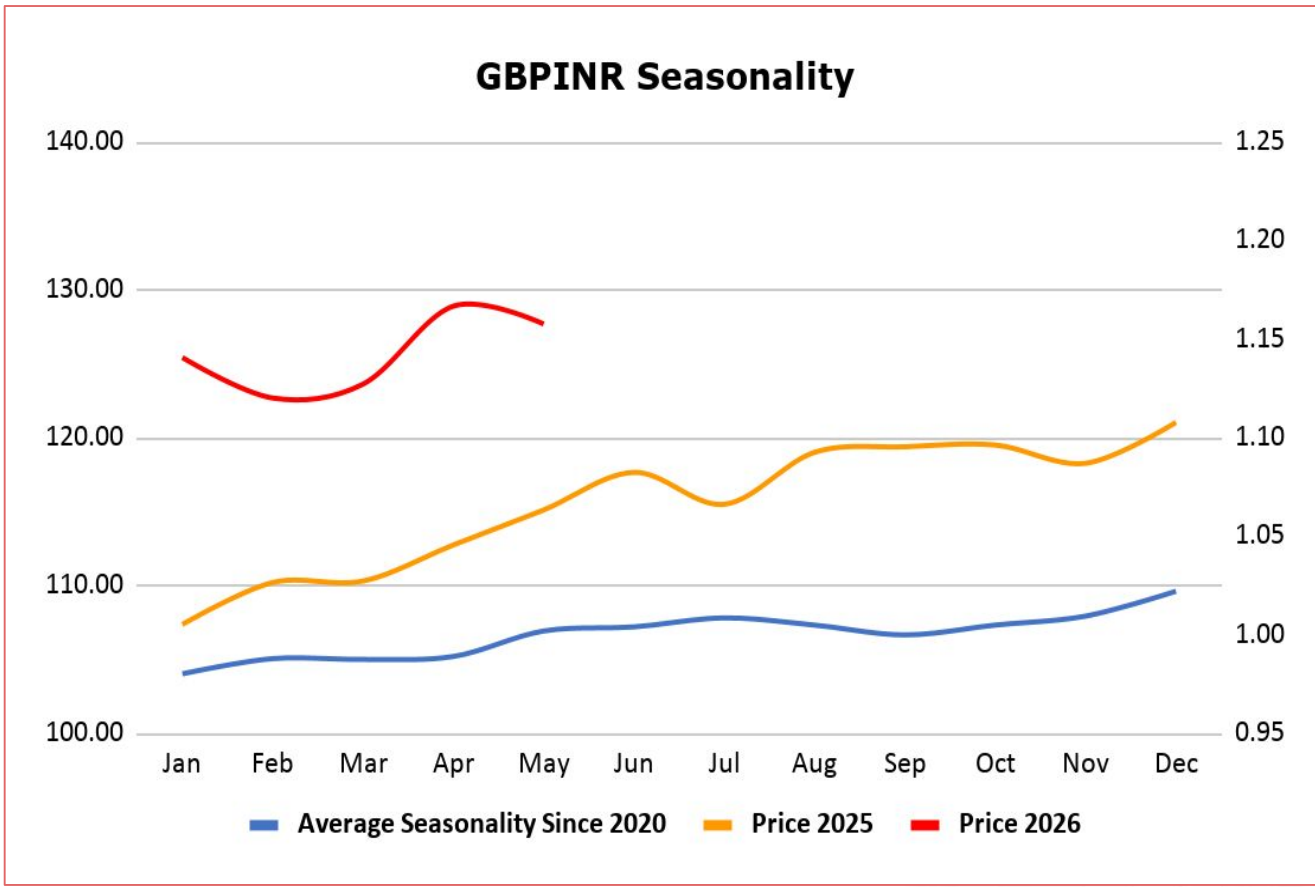
BOJ's Summary of Opinions showed policymakers generally viewed it as appropriate to continue raising the policy interest rate

FM Katayama said held talks with US Treasury Secretary Bessent, reaffirming a shared commitment to coordinate in foreign exchange markets if necessary.

25 June 2026



25 June 2026



### Economic Data

25 June 2026

Date	Curr.	Data
Jun 22	EUR	Consumer Confidence
Jun 23	EUR	French Flash Manufacturing PMI
Jun 23	EUR	French Flash Services PMI
Jun 23	EUR	German Flash Manufacturing PMI
Jun 23	EUR	German Flash Services PMI
Jun 23	EUR	Flash Manufacturing PMI
Jun 23	EUR	Flash Services PMI
Jun 23	GBP	Flash Manufacturing PMI
Jun 23	GBP	Flash Services PMI
Jun 23	USD	ADP Weekly Employment Change
Jun 23	USD	Flash Manufacturing PMI
Jun 23	USD	Flash Services PMI
Jun 23	USD	Richmond Manufacturing Index
Jun 24	EUR	German ifo Business Climate
Jun 24	USD	Current Account

Date	Curr.	Data
Jun 24	EUR	Belgian NBB Business Climate
Jun 24	USD	New Home Sales
Jun 24	USD	Crude Oil Inventories
Jun 25	EUR	German GfK Consumer Climate
Jun 25	USD	Core PCE Price Index m/m
Jun 25	USD	Final GDP q/q
Jun 25	USD	Final GDP Price Index q/q
Jun 25	USD	Unemployment Claims
Jun 25	USD	Core Durable Goods Orders m/m
Jun 25	USD	Durable Goods Orders m/m
Jun 25	USD	Personal Income m/m
Jun 25	USD	Personal Spending m/m
Jun 25	USD	Natural Gas Storage
Jun 26	USD	Goods Trade Balance
Jun 26	USD	Revised UoM Consumer Sentiment

### News

The S&P Global US Manufacturing PMI increased to 55.7 in June 2026 from 55.1 in May, surpassing market forecasts of 54.8 and reaching its highest level since May 2022. This expansion signifies that factory business conditions have improved continuously since last August, with growth steadily accelerating from the recent low point in February. The S&P Global US Services PMI rose to 51.3 in June 2026 from 50.7 in May, just above the market consensus of 51, according to a preliminary estimate. The latest reading indicated a modest improvement in business activity, the strongest since February, partly linked to the soccer World Cup. Output and new orders rose only slightly, with firms citing high prices, elevated interest rates, and weak confidence among businesses and consumers. The S&P Global US Composite PMI rose to 52.2 in June of 2026 from 51.5 in the previous month, reflecting the sharpest pace of growth in the US private economic activity since January, according to a preliminary estimate.

France's manufacturing business climate index fell to 100 in June 2026 from 102 in May and below expectations of 101. While the general production outlook improved slightly to -15 from -17, it remained negative. Personal production expectations also weakened to 2 from 4, and expected staffing was flat at 0, signaling muted hiring intentions. There was also a sharp drop in past production to 3 from 14, while order conditions were broadly stable, with global order books unchanged at -14 and foreign order books edging down to -11 from -10, though both remained above long-term averages. Labour market indicators were steady overall, with past staffing unchanged at -2, suggesting broadly stable employment conditions. France's overall business climate edged up to 94 in June 2026 from 93 in the previous month, though it remained well below its long-term average of 100. Retail trade showed a modest recovery, with the indicator rising to 90 from 89 as ordering intentions and the general business outlook improved slightly. Services also held steady at 93, signaling continued subdued conditions across all major sub-sectors.

**Scan the QR to connect  
with us**



**KEDIA ADVISORY**

## **KEDIA STOCKS & COMMODITIES RESEARCH PVT LTD.**

Mumbai. INDIA.

For more details, please contact Mobile: +91 9619551022

Email: [info@kediaadvisory.com](mailto:info@kediaadvisory.com)

SEBI REGISTRATION NUMBER - INH000006156

For more information or to subscribe for monthly updates

Visit [www.kediaadvisory.com](http://www.kediaadvisory.com)

This Report is prepared and distributed by Kedia Stocks & Commodities Research Pvt Ltd. for information purposes only. The recommendations, if any, made herein are expressions of views and/or opinions and should not be deemed or construed to be neither advice for the purpose of purchase or sale through KSCRPL nor any solicitation or offering of any investment /trading opportunity. These information/opinions/ views are not meant to serve as a professional investment guide for the readers. No action is solicited based upon the information provided herein. Recipients of this Report should rely on information/data arising out of their own investigations. Readers are advised to seek independent professional advice and arrive at an informed trading/investment decision before executing any trades or making any investments. This Report has been prepared on the basis of publicly available information, internally developed data and other sources believed by KSCRPL to be reliable. KSCRPL or its directors, employees, affiliates or representatives do not assume any responsibility for or warrant the accuracy, completeness, adequacy and reliability of such information/opinions/ views. While due care has been taken to ensure that the disclosures and opinions given are fair and reasonable, none of the directors, employees, affiliates or representatives of KSCRPL shall be liable for any direct, indirect, special, incidental, consequential, punitive or exemplary damages, including lost profits arising in any way whatsoever from the information/opinions/views contained in this Report. The possession, circulation and/or distribution of this Report may be restricted or regulated in certain jurisdictions by appropriate laws. No action has been or will be taken by KSCRPL in any jurisdiction (other than India), where any action for such purpose (s) is required. Accordingly, this Report shall not be possessed, circulated and/ or distributed in any such country or jurisdiction unless such action is in compliance with all applicable laws and regulations of such country or jurisdiction. KSCRPL requires such a recipient to inform himself about and to observe any restrictions at his own expense, without any liability to KSCRPL. Any dispute arising out of this Report shall be subject to the exclusive jurisdiction of the Courts in India.